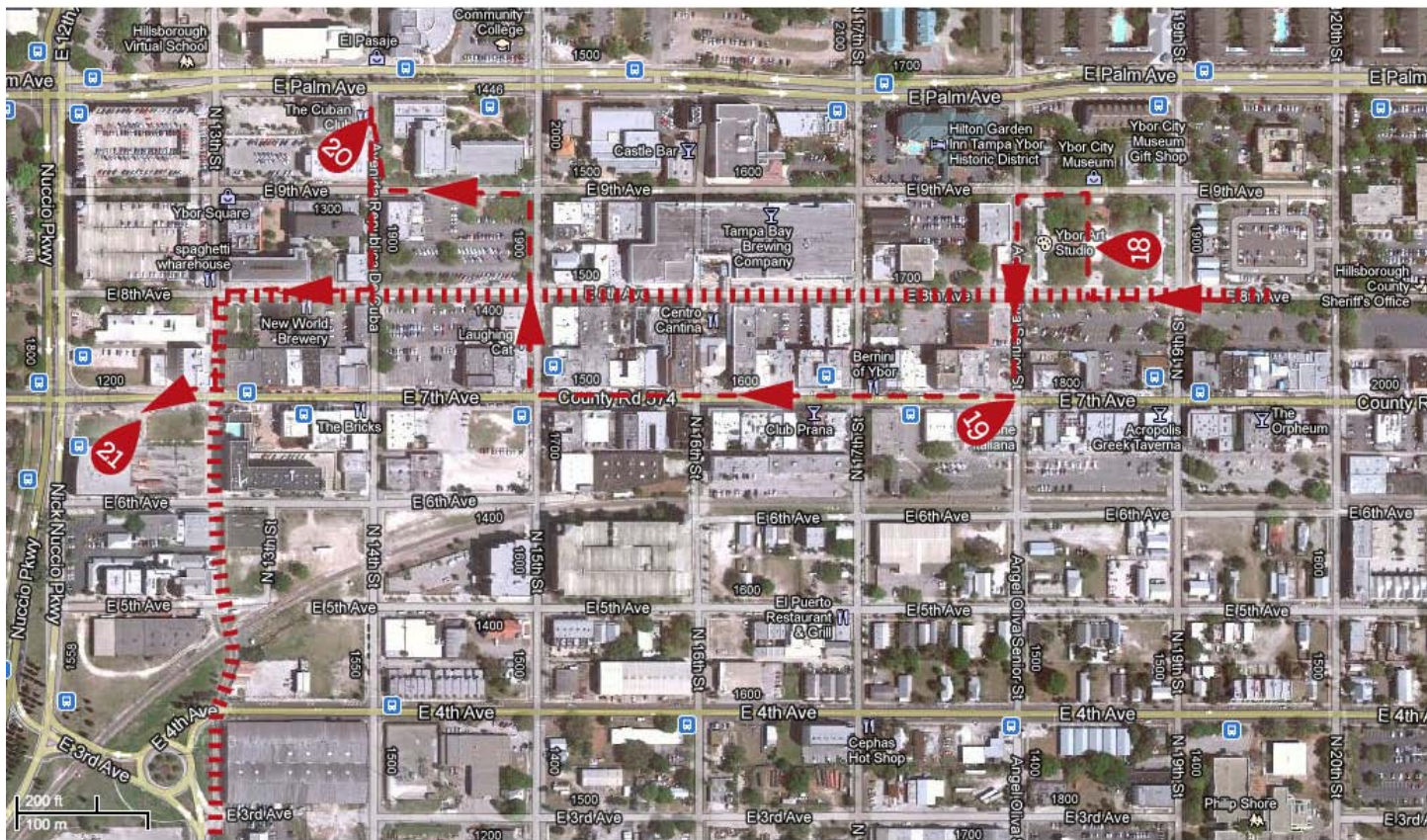


SATELLITE VIEW OF HIKE YBOR CITY SECTION

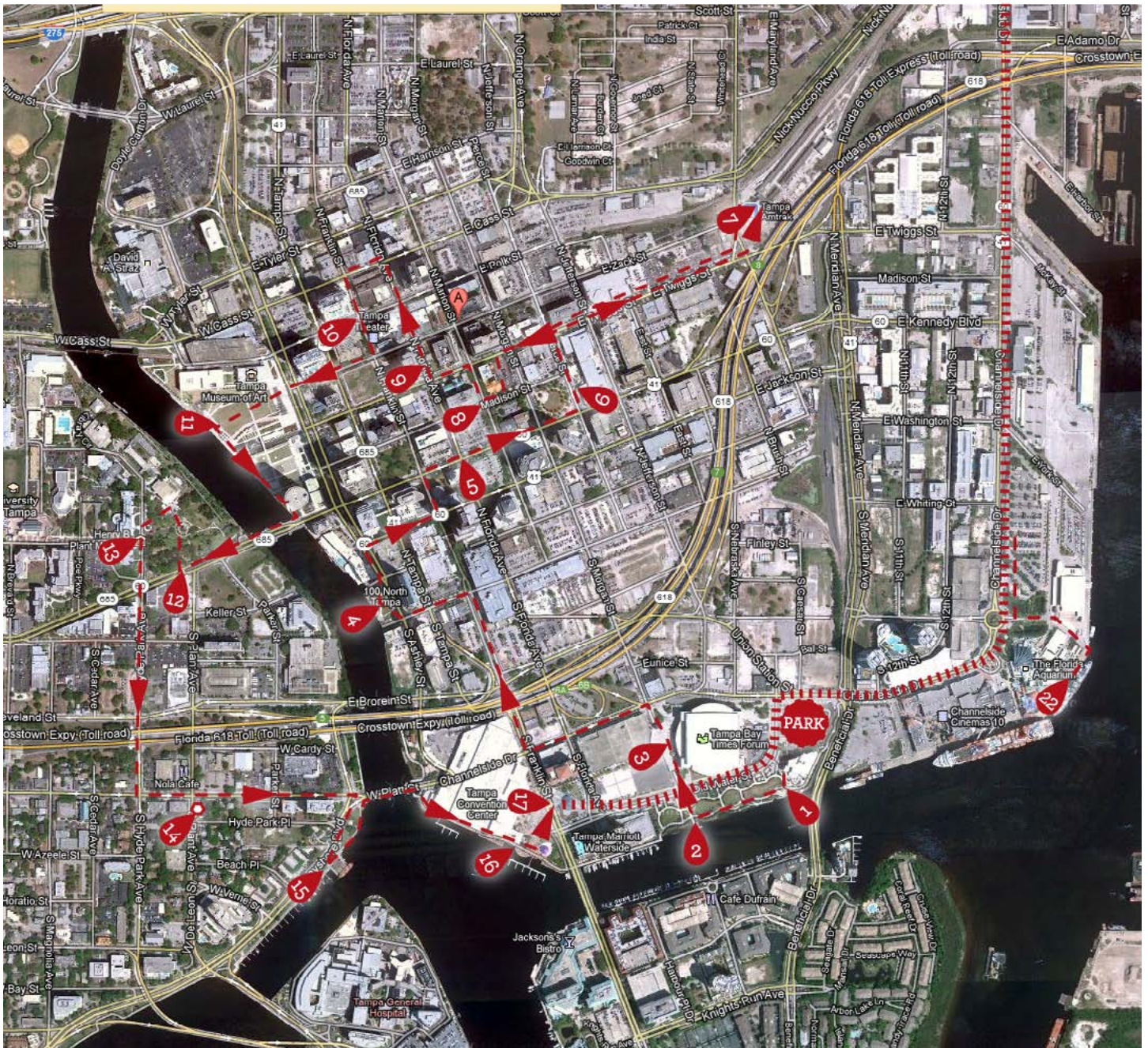


CONTINUES
ON NEXT PAGE

SATELLITE VIEW OF HIKE

DOWNTOWN TAMPA SECTION

CONTINUED FROM
PREVIOUS PAGE



TAMPA HISTORIC HIKE

WAYPOINT 1

A DAY AT THE MUSEUM

Park by the Tampa History Museum. Additional Parking is available at the South Regional Parking Garage by the Tampa Bay Times Forum, Channelside and the Aquarium. Walk to the History Museum.

The Tampa Bay History Center is a state of the art museum built in 2009. It houses many exhibits that highlight the history of the Tampa Bay Area. Features include: Native American artifacts, sports memorabilia, cigars, immigrant history, war history, cattle drive stories, local pioneer stories and tales of explorers. The museum is highly recommended and will provide perspective as you walk the rest of the hike.

The Winds of Change movie is not a necessary watch and can be skipped. However, the Coacoochee movie was amazing! It was a great technical presentation and also had balanced views. Everything on the first and 2nd floors is worth seeing. The third floor is for traveling exhibits; so in most cases, the exhibits featured there will not be relevant to Tampa history.

GPS Start Point:
27°56'31.25"N 82°27'0.93"W

Challenge title
History Detectives

Challenge description
Answer these questions from the exhibits:

1. What Native American tribe lived in Florida when Florida became a state? _____
2. What ethnic group was instrumental in Tampa's cigar industry? _____
3. What is the name of the fort that used to be located in downtown Tampa? _____

Directions to next waypoint:
Just outside the museum is Hero's Plaza. Look around there and then **walk to the four arch dome** by the water. This is a Seminole War tribute. Then, **walk to the right (west)** until you see a small white pier.

GPS to Next Waypoint: 27°56'27.87"N
82°27'7.62"W

WAYPOINT 2

HARBOR ISLAND

Across the water you will see Harbor Island. Harbor Island was originally a small natural island that was built up to become a port facility in the 1900s. It had a rail yard with a large swinging drawbridge and phosphate elevators. In 1979, the land was purchased from the Seaboard Coast Line and was redeveloped for residential, office and retail purposes. If you look to the left, the small bridge you see replaced what used to be a large swinging rail bridge. Before the 1980's, the island looked like a rusted shipwreck.

Directions to next waypoint
Head north towards the Tampa Bay Times Forum and the large lightning bolt out front. Go to the **left of the tunnel** that runs under walkway.

GPS to next waypoint
27°56'34.43"N 82°27'9.62"W

WAYPOINT 3

LIGHTNING STRIKE

This venue opened in 1996 and has since been used for basketball, arena football, concerts, civic events and of course, hockey. Many people are surprised that Florida has a hockey franchise. In the late 1980s the NHL announced an expansion into the South. Tampa got its team in 1992, followed by the Mighty Ducks in Anaheim, and the Florida Panthers in South Florida. The Lightning won the

Stanley Cup in the 2003-2004 season. The land here was previously a park called Rex Beach Park, until the 1960s.

Challenge title
Thunder Struck

Challenge description
1. In the courtyard, who is the statue of (he's holding a hockey stick)?

Directions to next waypoint
Head toward Channelside Drive, take a left (west). At Franklin Street, **take a right (north).** Under the Crosstown Expressway, look out for a marker about the Tocobaga Indian Mound. Head two blocks north to Whiting Street and **take a left (west).** At the end of whiting street, you'll see a small park.

GPS to next waypoint
27°56'42.08"N 82°27'30.79"W

WAYPOINT 4

MACDILL PARK RIVERFRONT

This park has many signs that cover the founding and history of MacDill Air Force Base and its contributions to Tampa.

During the early days of Tampa this area was used as a wharf for small boats and businesses. An early business of note was the Oyster Saloon. In 1837, the saloon was the location of the first cigar rolled in Tampa.

Challenge title
CentCom

Challenge description
1. When did MacDill AFB open?

2. What three New Deal program items were built in Tampa besides MacDill?

Directions to next waypoint

Head north of the park on Ashley street. At Jackson Street, **go right two blocks**. At Franklin Street you will see two markers to the right (south) in Poe Park. After looking at these two markers, **head north** on Franklin one block. At Kennedy, City Hall Plaza is to the right.

GPS to next waypoint
27°56'51.35"N 82°27'25.73"W

WAYPOINT 5

CITY HALL

Just before City Hall is the Tampa City Hall Plaza. It has two markers - you should read the Rough Riders one. This location provides a nice view of City Hall.

Built in 1915, City Hall itself is one of a few examples of Art Deco architecture popular in the Tampa area. It is closed on weekends and there is not much to see inside. The clock on the top of the building includes the name "Hortense" and it weighs 2,840 pounds.

Challenge title
City Hall

Challenge description
Look above the doors for the stone seal to answer the following questions:
1. When was Tampa organized?

2. What is the name under the ship?

Directions to next waypoint

From City Hall, **cross to the other side** of Kennedy Avenue and head right (east). **Head three blocks** until you see a park on your left. Then, head to the cupola (dome-like shaped building). Along the way is the Masonic Lodge, which was built in 1928 to house one of Tampa's oldest organizations, the Freemasons, founded in 1850. Next door is the Scottish Rite building, built in 1921. As you walk past the Scottish Rite building, check out the side - it's pretty

impressive.

GPS to next waypoint
27°56'56.27"N 82°27'18.96"W

WAYPOINT 6

PARK AND COURTHOUSE

Joe Chillura Courthouse Square opened in 2000. It has many historical signs incorporated into its history walk. The signs are informative; but, are not that interesting and can be skipped. Walk along the Kennedy side and then see the sign in the ESE corner. It includes information about the dome in the park, inspired by the old 1982 county courthouse.

Hillsborough county was formed in 1834 and was named for Wills Hill, Lord Hillsborough. He is famous for commissioning an early survey of Florida. After you have seen the square, if you look to the east you will see the Hillsborough County Courthouse, built in 1952. This structure was built on the home of William Hooker - the Florida 'Cattle King' of the late 1800s. The home was later turned into a hotel. To the right is a Confederate Soldiers memorial, dedicated in 1911. To the left, you will notice that it includes a war memorial for WWI, WWII, and the Korean War. Behind that is a very unique temple to cisterns.

To the north and one block east on Twiggs Street is the George E. Edgecomb Court House, which houses the Florida State Circuit Court 13th Circuit for Hillsborough County. This is a branch of the Florida State Court system and hears cases not handled by county courts. Cases are those over \$15,000 in contention, felonies, property titles and appeals from county courts. It has a large bronzed tribute statue out front.

Challenge title
All That Shines

Challenge description

1. The gold statue in front of the Circuit Court has an inscription in Latin - what does it mean in English?

Directions to next waypoint

Head toward the courthouse and **turn left** onto the next street. At Twiggs St. **turn right (east)** until the road is about to go under the Crosstown Expressway. To the Northeast, you will see a brick building called Union Station. Go into that building.

GPS to next waypoint
27°57'7.81"N 82°27'3.25"W

WAYPOINT 7

TRAIN STATION

Tampa's Union Station was how most people arrived to Tampa before the interstate highway system. This building was built in 1912 in the Italian Renaissance revival style. The station combined the operations of three separate lines that operated in Tampa. As train travel declined, the building began to decay due to a lack of maintenance. In 1984, it closed and passengers used a portable building for ticketing and a waiting room. Restoration of the structure was completed in 1998 and again serves as the rail station for Tampa.

Challenge title
Trains

Challenge description
1. How many track markers remain?
2. What train line still operates here?

Directions to next waypoint

From the train station **head back on Twiggs St.** Once you see an orange roofed church, **head through the parking lot** to the front of the church on Madison St.

GPS to next waypoint
27°56'57.06"N 82°27'23.91"W

WAYPOINT 8

PLACES OF WORSHIP

The church with the orange colored steeple is Saint Andrews Episcopal Church. This church was built in 1904 in historic Spanish Mission style architecture. If the church is open, walk in and look around. The wood rail around the front is from the original 1871 wooden church that once stood on the same location.

Leave the church and head back north a block on Marion Street and head left to the Sacred Heart Catholic Church. Construction started in 1898 and was completed in 1905, making it the oldest Catholic church in Tampa. The building was built mostly in the Romanesque style with a 135 ft tall dome. The church was built on the grounds of the old wooden St Louis Church, which was built in 1860 in honor of the Fr. Luis Cancer, a missionary who was killed in Tampa in 1549. If open, please look inside; it has some amazing architectural elements. You may call this number to see if someone can open it for you:
813-229-1595.

Challenge title

If Only They Gave Tours

Challenge description

1. St Andrews helped establish what ministry? _____
1. Sacred Heart: In honorem of whom?

Directions to next waypoint

From the Catholic church head north on Florida Ave.

GPS to next waypoint

27°57'12.25"N 82°27'29.75"W

WAYPOINT 9

FLORIDA AVE

North of the Catholic Church on Florida Ave is the old neoclassical granite Post

Office and US Federal Courthouse, built in 1902.

Just past the Courthouse and to the right (a block away) you can see the First Presbyterian Church, built in 1924 and expanded in 1949. The congregation dates back to 1854.

On the right you will pass the new US Federal District Courthouse, the Sam Gibbons US Courthouse, which looks like a high rise condo or office building. This building is only 17 stories tall, but is the height of a standard 35 story building. It houses only about 120 employees.

On the way you'll see the Kress Building (1929) on the left side. Note the old painted signage high on the side of the building. Next door is the old Woolworth Building, erected in 1920. Woolworth was an early version of a superstore like Walmart.

Past that you will see the historic Floridan Hotel. The hotel was built in 1926 and was the tallest building in Florida until 1966. In its time, this hotel was known for its grandeur and luxurious appeal, hosting stars like Gary Cooper and Elvis. It declined in the 1960s and by the 1980s was dilapidated. It is currently going through a complete restoration.

NOTE: if you started late or want to keep the hike down to 5 miles, you can turn left here and go to Franklin Street to Waypoint 10.

Past the hotel you will see the 1960s-looking Methodist Church. This congregation started in 1846 and the old chapel was later built in 1948.

A block to the left you will see the Henderson Building that once housed a music company. If you take the next turn on Harrison Street you will see a Tampa Postcard mural.

Directions to next waypoint

Continue to Harrison Street and take

a left (west). At the next block head south on Franklin St. (Directions for spur: **continue north** and turn right on Harrison St until you see a red brick church. If you are going to skip the Liberty ship at the end, then this is a good spur to add.)

GPS to next waypoint

27°56'54.87"N 82°27'43.51"W

Optional Spur

HARLEM ACADEMY, ST PAUL'S AND THE OAKLAWN CEMETERY (PART ONE)

The red brick building is the St. Paul A.M.E. Church. The congregation was started in 1870 and is the oldest African American congregation in Tampa. After experiencing dwindling membership it closed its doors in 2010. The church was built in 1914 and has been visited by many dignitaries including: Martin Luther King, Jr, who preached there, Bill Clinton, Rev. Jessie Jackson and Supreme Court Justice Thurgood Marshall.

On the grounds next to the red brick church was once the historic Harlem Academy. The school was a three story structure built in 1871 for African American students. Although the school was closed and demolished in 1965, many former students of the Harlem Academy went on to become prominent citizens. A few blocks to the north, Rev. Billy Graham began his famous career in the now demolished Saratoga Bar in 1939.

Until the 1940s, there were many cigar factories, which eventually moved to other parts of town. Southeast downtown was another area where many cigar factories were located. These buildings were demolished because of decay and are now used for parking. Most of the empty lots and new buildings downtown stand where the factories once were.

Challenge title

Neon Lights

Challenge description

1. How many arches are under the neon sign? _____

Directions to next waypoint

Go one more block to the east and you'll see a cemetery.

GPS to next waypoint

27°57'13.45"N 82°27'25.92"W

**OAKLAWN CEMETERY
(PART TWO)**

Oaklawn Cemetery was Tampa's first public burial ground. It is the final resting place for most of Tampa's early inhabitants including Vicente Ybor, mayors, slaves, pirates, confederate soldiers and yellow fever victims. With about 1700 graves onsite, the cemetery is quite large; you could spend some time here. It is recommended that you walk straight in and only see sites along the main path. At the first intersection, Tampa's first mayor was buried. Continue straight to a placard showing the sections. Visit Vincent Ybor's grave to the right (large above ground white one). Next, head to the wrought iron fenced area of the pioneer missionaries and then head back out. As is the case with any part of the hike, if you do not feel safe, do not go in.

Challenge title

Duck Or You Might Get Hit

Challenge description

1. What Union ship fired an 8" shell into the cemetery? _____

Directions to next waypoint

Head back towards St Paul's and continue off Harrison until you reach Franklin Street. Franklin Street was Tampa's main street and was the first paved street, the first to have electric lights and the first to get sidewalks. **Turn left (south)** and go three blocks until you see the Tampa Theatre on your left.

GPS to next waypoint

27°57'0.02"N 82°27'32.28"W

WAYPOINT 10

TAMPA THEATRE

The Tampa Theatre was built in 1926 as one of America's most elaborate movie palaces and was the first air conditioned building in Tampa. The inside of the theatre is a sight unto itself. It has the feel of a Mediterranean courtyard with stars, gargoyles and statues. From its opening until the late 1960s, the theatre was the center of Tampa culture. By the early 70s the theatre was in danger of being demolished as people began to move out into the suburbs. The theatre is currently safe and now hosts many events. They do offer tours for \$5 a person and 90 minutes; it is recommended that you come back and see it some other time. However, if someone is at the front, you may want to ask if you can pop in and take a peek.

Directions to next waypoint

From the theatre, **head left to Zack Street and turn right (east)**. Take Zack Street until it ends in the park. **Walk through the park** until you reach the river.

GPS to next waypoint

27°56'54.87"N 82°27'43.51"W

WAYPOINT 11

MUSEUMS AND CURTIS HIXON PARK

Curtis Hixon Park was built on the grounds of the demolished old convention center. Restrooms are located on the south side of the park. The site now plays host to the Tampa Art Museum and the Children's Museum. As you walk towards the Hillsborough River, you will see the spires. The Tampa Bay Hotel is across the river. Hillsborough River was the heart of Tampa's commercial and cultural life in the early days.

Challenge title

Down By the Riverside

Challenge description

1. In what year was the Riverwalk project established? _____

Directions to next waypoint

Walk along the river toward the round skyscraper. The black skyscraper to the east of the round one with the unusual bottom is the Park Tower, built in 1973 to be Tampa's first skyscraper.

Near the bridge was the location of the Tampa Ferry. In 1888, the ferry ceased operations with the construction of the city's first bridge, a wood bridge for the Tampa Bay Hotel.

Cross the Hillsborough River until you see the Tampa Bay Hotel Marker.

GPS to next waypoint

27°56'45.43"N 82°27'46.27"W

WAYPOINT 12

PLANT PARK

Before you go into Plant Park, note the domed church on Kennedy. Built in 1923, this is the First Baptist Church of Tampa; its congregation dates from 1859. Read the sign about the The Tampa Bay Hotel. Then, head back 100 feet and enter the park. Head right on the path toward the central spire fountain and then continue northeast until you see an old wall and a cannon. These 1918 24-pounder cannons are from Fort Brooke. During the Civil War a Union raiding party damaged the guns by blowing off one side pivot and the damage can still be seen on the two guns. It was here that Desoto may have landed, the other alternative being to the south in Manatee County.

Challenge title

1864: Civil War Reaches Tampa

Challenge description

1. What regiment captured the fort in a surprise raid and disabled the guns?

Directions to next waypoint
Head to the hotel.

GPS to next waypoint
27°56'47.79"N 82°27'49.53"W

WAYPOINT 13

THE TAMPA BAY HOTEL

Welcome to Tampa's most beautiful building. This building was originally built by Henry Plant in 1891 as the premier hotel out of the eight built for his rail line. Plant had a steamship line that took passengers to exotic Caribbean destinations from Tampa. The line was over a quarter mile long and covered six acres. During its peak use times, the Tampa Bay Hotel was a destination for many celebrities and contains the first elevator installed in Florida. The grounds spanned across 150 acres and included a golf course, bowling alley, racetrack, casino and indoor heated pool. The minarets are part of the Moorish Revival theme selected by Plant. During the Spanish American War, the US used the hotel as a base of operations. Generals planned the campaign in the hotel's rooms and lobbies and the soldiers camped on the grounds. Teddy Roosevelt stayed in a suite during the planning of the war.

In 1930, the hotel was closed and passed to Tampa Bay Junior College, which later became the University of Tampa. If it is open, walk up to the veranda and go inside the lobby of the hotel. The main lobby and the side rooms are quite interesting.

Challenge title
Living Large

Challenge description
1. Outside in the veranda, who was the chairman of the University of Tampa when they rededicated the building?

Directions to next waypoint
From the hotel, **head back toward Kennedy Blvd.** At Kennedy Blvd. you will see a memorial to President

Kennedy. In the other direction, you will see a large naval gun. Visit the gun and then come back and **head south on Hyde Park Ave.** After the Crosstown, you'll see the restored Peter O. Knight house. **Continue to Platt St and turn left (east)** until you come to Plant Ave. If you turn right, you'll see a brick building with a grey roof.

GPS to next waypoint
27°56'28.61"N 82°27'45.59"W

WAYPOINT 14

HYDE PARK

Hyde Park begins its history as a neighborhood in the 1880s after Henry Plant built the bridge across the Hillsborough River. Houses popped up quickly all the way to the site of Old Hyde Park Village and down Bayshore Blvd. Many of the multi-story houses you see were built in the 1890s-1920s.

The Hutchinson House, built in 1908, is an example of Second Empire architecture because of its French style roof made of hand cut slate tiles. It has 18-inch thick brick walls and five fireplaces. In 1932, it was a hospital, then a rooming house, then a fraternity house. It was recently renovated by a lawyer to bring it back to its original state. This is a private residence - so please do not walk up to it.

Challenge title
Hyde n' Seek

Challenge description
1. One house still has its step stone, which was used to aid in getting up on a horse - What is engraved on the stone?

Directions to next waypoint
Continue down Platt Street and head south on Bayshore until you see the main dock. About 95% of the time, there is a pirate ship there! (If you want you can **head south** of the Hutchinson

House and **turn left** on Beach Street. This path lets you walk by some historic Hyde Park houses; but, when you come out on Bayshore there is no legal street crosswalk).

GPS to next waypoint
27°56'24.92" 82°27'35.20"W

WAYPOINT 15

ARRGH!

At this dock you will see the pirate flagship used during the Gasparilla Festival (it is docked here almost all year long). Jose Gaspar was a pirate who raided the coast of west Florida between about 1890 and 1921. In 1821, the USS Enterprise (not Star Trek) lured his ship into a battle and he leapt to his death, anchor in hand. It is unclear how much of the Gaspar story is truth or legend. The first Gasparilla Festival was held in 1904.

Challenge title
Ahoy Maties!

Challenge description
1. What group currently operates the pirate ship? _____

Directions to next waypoint
From the ship, **head north to the Platt Street drawbridge**, built in 1926. Along the way, there is a Christopher Columbus statue. After the bridge, **take the first opening to the right** to walk in front of the convention center. Walk until you come to the round drop off area before the second docks.

GPS to next waypoint
27°56'26.11"N 82°27'20.72"W

WAYPOINT 16

FORT BROOKE AND THE MOUTH OF THE HILLSBOROUGH RIVER

Where the convention center now stands was once a large prehistorical Timuca temple mound. Fort Brooke was built in

1824 next to the mound. The purpose of the fort was to contain the Seminole Indians, control the river and curtail illegal activities in the newly acquired Florida territory. The wood palisade fort was the major outpost in West Central Florida during the Seminole Wars and the Civil War. During those years many buildings were built on the grounds. Union forces captured the fort in 1864 and the post was decommissioned by the Army in 1883.

Look to the southwest and you will see Tampa General Hospital. The hospital was established here in 1926 on a small island called Grassy Island. The buildings you see were built in recent years.

Grassy Island would later become a part of the now much larger, man-made Davis Island. In the 1920s mud was dredged from Tampa Bay to create a resort community here and development stalled in the 1930s. Many interesting structures on the island are from that era. It is well worth driving through when you get a chance. The island has its own airport and yacht club.

Challenge title
Yachts All

Challenge description
1. What is the tallest structure (not including antennas) on Grassy Key/Davis Island?

Directions to next waypoint
Look to the east/northeast, you will see a round building that is the next destination; **take the trolley**.

GPS to next waypoint
27°56'28.95"N 82°27'17.42"W

WAYPOINT 17

STREETCAR
Time to take the streetcar! The streetcar

you are about to ride opened in 2002 and was modeled after Tampa's electric street cars from 1892-1946. You are going to head to stop #1 in Ybor city.

TECO Line Streetcar System

Cost: Under 17 yrs old, \$1.25 each way; over 17 yrs old, \$2.50 each way. One day unlimited passes are \$2.50/\$5.00. You will take the street car one more time; so, you will probably want to get the day pass. Street cars run every 20 minutes starting at 11am on Friday and Saturday and it opens at noon Sunday-Thursday.

The street car will pass the Forum, the Tampa History Museum and the Florida Aquarium. On your left you will see what once used to be the warehouse district; but, in recent years it has become a thriving neighborhood. After the aquarium, you will see the Port of Tampa to the right. Here, ships are still repaired and much of West Central Florida's exports and imports come through here. You will get to see this area from the Victory Ship as well.

Challenge title
What's Old is New Again

Challenge description
1. What is the name of the plaza where you get on the street car?

Directions to next waypoint
Take the street car to the last stop, Number 1. From the street car station **head back along the tracks** to the park/square, half a block away.

GPS to next waypoint
27°57'39.86"N 82°26'18.82"W

WAYPOINT 18

CENTENNIAL PARK
Ybor was founded in 1885 by cigar manufacturers. The city was highly populated with Cuban, Spanish, Italian and Jewish immigrants, making it one

of the few multiethnic towns in the American South at the time. Centennial Park was built to commemorate Ybor City's rich cultural Latin heritage. Here, Mayor Nuccio has a statue that commemorates the contributions of immigrants to Tampa's society. Take some time to observe the statues and markers. If you are here on a Saturday, they often have the Ybor Market in the park, which you can visit.

Behind the park to the north is the Ybor City Museum State Park. You can probably skip visiting it because it is quite small and for the cost, much of the information it provides was already covered in the Tampa Bay History Museum.

Challenge title
To Walk These Streets in Their Shoes

Challenge description
1. In what year was Major Nuccio born?

2. What is his ancestry?

Directions to next waypoint
From the park, **walk west** until you come to Angel Olivia Senior Street. **Head left (south)** to 7th Street.

GPS to next waypoint
27°57'36.89"N 82°26'21.16"W

WAYPOINT 19

7TH STREET
Although now an entertainment district, 7th Street was once the thriving main street for Ybor City. The buildings along the street are mostly from the golden age of Ybor (1902-1929). Here you can see the wrought iron balconies popular at the time. Many of the large solid buildings in the area were built as social clubs, catering to the ethnic groups. The historical markers along the way will tell the history of 7th Street. Things to see in order as you head west on 7th

street: cross over and see the Italian Club on the south side of the road. Then, continue on the south side and look at the architecture on the north side. Finally, cross over to the north side of the road and head to Centro Ybor, where you will find a statue of Vicente Martinez-Ybor, the developer of Ybor City.

Challenge title
Dance Hall

Challenge description

1. What is the name for the Italian-American society?

2. What restaurant is now in the Bank of Ybor building?

Directions to next waypoint

Continue down 7th Street until 15th Street and take a left. Walk on the opposite side of the street, where you will see a marker about the birth of Ybor. **Continue past the marker** until you reach 8th Avenue. On 8th Ave, **take a left (west)** for one block and then head right on Avendia Republica de Cuba. **Walk on the right side of the road** to Palm Avenue. Along the way, you will see a pink building built by Vicente Ybor that was the headquarters for his land company in 1895. It was then converted to a clinic a few years after. The clinic closed in 1980 and the building was restored in 1998 to match elements of the period in which it was built.

GPS to next waypoint
27°57'43.04"N 82°26'39.23"W

WAYPOINT 20

CUBAN CONNECTION

This was the social club for Tampa's Cuban immigrants. Tampa's Cuban community was a cornerstone of Ybor City and this building was its nucleus. As Cuba moved toward independence from Spain, the Cuban community was heavily

involved in the struggle. On the second floor you can peek in the doors to see the entrance to the theatre. Around the corner is the marker for this building.

Head back to 9th Avenue and Avendia Republica de Cuba. The building at the corner made of brick with the many arched porticos is the Cherokee Club. Read the marker to learn about the who's who of the 1890s right here in Tampa! Cross the street heading south to learn more about Tampa's cigar industry.

Challenge title
Players Club

Challenge description

1. Who is the large white bust of?

2. What year was the Cherokee Club established? _____

Directions to next waypoint

Head south from the Cuban and Cherokee Clubs on Avendia Republica de Cuba to 8th Ave. On 8th Ave, **take a right (west)** for one block and then take a left on 13th Street. You'll notice the street car tracks. Around the corner to the south is the Ybor City sign. If you have time before the next trolley, you can snap a picture. **At the street car station, take the Downtown/Channelside car (heads south) and get off at Station 7.**

GPS to next waypoint
27°57'36.23"N 82°26'45.77"W

WAYPOINT 21

HITCH A RIDE

Take the Downtown/Channelside car (head South) and get off at Station 7. Give your feet a rest and take the trolley to the most exciting feature of the hike, the American Victory Ship!

Directions to next waypoint

At Station 7, get off and head toward the east. You should see signs to the Victory Ship.

GPS to next waypoint
27.94'41.27 N, 82.44'40.59 W

WAYPOINT 22

VICTORY SHIP

The American Victory Ship is a WWII era merchant ship that was converted into a floating museum. Victory ships were built to move the materials needed for the European and Pacific campaigns. During the Atlantic War, ships like these carried the critical supplies to Great Britain and our other allies. The American Victory Ship is one of four fully operational WWII ships in the country. Twice a year, the ship is taken out for a cruise!

Cost: \$5 under age 12, \$10 for adults
Back in Time Field Trip Tour takes 1 hour for 10-45 people. Cost: 4.00/ person. It is recommended that you call ahead. Hours: 10am - 5pm

American Victory Ship

Group Information: American Victory Ship

Challenge title
Not So Defenseless

Challenge description

1. What size gun is on the bow?

2. What year was the bowgun manufactured?

Directions to next waypoint

It's better to **walk to the west of the Tampa History Museum** parking area, then **take the trolley**, since you are midpoint between the stations.

GPS to next waypoint
DONE!

CHALLENGE ANSWERS

WAYPOINT 1

Seminoles, Cubans, Fort Brooke

WAYPOINT 3

Phil Esposito

WAYPOINT 4

1. 1941 2. Seawall, Armory, Airport

WAYPOINT 5

1. July 15, 1887 2. Mascotte

WAYPOINT 6

Truth and Virtue

WAYPOINT 7

1. Five 2. Amtrak

WAYPOINT 8

1. Metropolitan Ministries 2. S.S. Gordis Jesu

WAYPOINT 9 - Optional Spur

Part One - 5

Part Two - USS Sagamore

WAYPOINT 11

1976

WAYPOINT 12

2nd Colored Regiment

WAYPOINT 13

Carl Brorein

WAYPOINT 14

Hutchinson

WAYPOINT 15

Ye Mystic Krewe

WAYPOINT 16

Brick smoke stack

WAYPOINT 17

Greco Plaza

WAYPOINT 18

1. 1901 2. Sicilian

WAYPOINT 19

1. L'Unione Italiana 2. Bernini's

WAYPOINT 20

1. Jose Marti 2. 1888

WAYPOINT 21

1. 3" 2. 1943

TAMPA HISTORIC HIKE PLAN

LENGTH: 5.2 miles (5.8 with spur) miles do NOT include the Trolley distance

ESTIMATED TIME: 6-7 hours

DIFFICULTY: Easy, no elevation changes

START POINT: Tampa Bay History Museum

HIKE WRITTEN BY: Eric Hilferding

SUMMARY

This hike is planned as a **five mile hike** through the historic parts of the city of **Tampa**. The hike will cover much of the history of Tampa, from its native inhabitants, Spanish exploration, the era of the immigrants and into modern times. The experience begins with a walk through the Tampa History Museum. You will then walk through modern **skyscrapers and century old buildings**. The hike will visit the historic Tampa Hotel, which is now the University of Tampa. Follow Bayshore Boulevard to the **Gasparilla pirate ship**. The Tampa streetcar will take you to the **historic Ybor** City district. Walk down 7th Avenue through the history of Tampa's immigrant neighborhoods. **The streetcar takes you back to the hike's highlight - The S.S. American Victory Ship.**

LOCATION

The historic City of Tampa is located on the West Coast of Florida, an area that is commonly referred to as Tampa Bay. This city is rich in culture and history, featuring unique buildings and structures and showcases some of the area's most breathtaking views of the bay. This hike begins with the Tampa History Museum that opens at 10am. The address is:
801 Old Water Street Tampa, FL 33602 and they can be reached at (813) 228-0097.

PARKING

Park by the Tampa History Museum. Additional parking is available at the South Regional Parking Garage by the Tampa Bay Times Forum, Channelside and the Aquarium. GPS Start Point: 27°56'31.25"N 82°27'0.93"W

PLANNING FOR YOUR HIKE

ACCOMMODATIONS

Camping at Camp Owen J. Brorein

Many youth groups can camp at a Boy Scout Camp. Camp Brorein is the recommended site for camping close to the hike.

For more information about camping at local Boy Scout camps visit: [Camping Info](#)

Nearby Boy Scout® Camps

Camp Owen J. Brorein: 32 minutes to the Northwest. Operated by Gulf Ridge Council.
16901 Boy Scout Road, Odessa, FL 33556

WHERE TO EAT

Be sure to grab a Cuban sandwich with beans and rice at Carmines in Ybor. There are also many other places with Tampa flavor to choose from.

AVAILABLE TOURS

There are tours available in the Tampa History Museum, the Ybor Museum and the American Victory Ship. It is recommended that you call ahead to make arrangements for group tours.

COST

Estimated costs for the day include:

Parking at: Tampa History Museum, Channelside - **\$10 per car**, Forum Parking Garage and Aquarium - **\$5 per car**.

Tampa History center, trolley, Ybor Museum and Victory Ship

Adults 18+ total: \$31/ person

13-17 total: \$26.50/ person

under 12 total: \$18.50/ person

It is recommended that you call ahead to see if group rates are applicable. The Victory Ship offers a great group rate.

Tampa Bay History center

Adults 18+ total: \$12/ person

13-17 total: \$10/ person

under 12 total: \$7/ person

Hours: 10am-5 pm

Welcome to the [Tampa Bay History Center](#)

Groups should call ahead at **813-675-8981** or email education@tampabayhistorycenter.org

THINGS YOU'LL NEED

Sunscreen • Lots of water • Compass (real or on smartphone)

Camera • Money for the Streetcar

TAMPA HISTORIC HIKE